

# All the benefits of GC Tooth Mousse

## Plus Fluoride



GC

# Why use GC Tooth Mousse Plus?

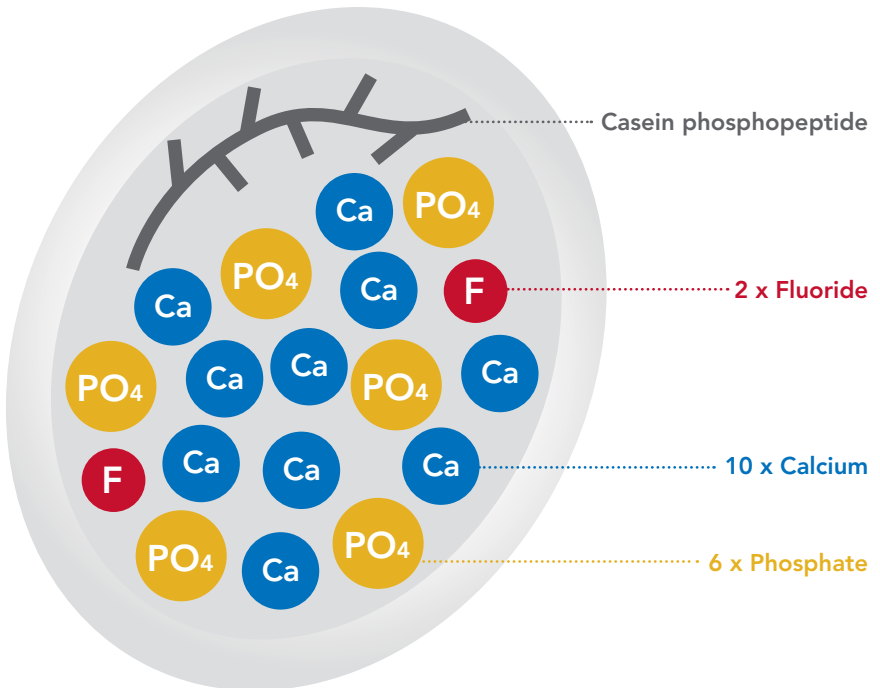
## Because GC Tooth Mousse Plus:

- + Delivers all the minerals required to build fluoroapatite – calcium, phosphate and fluoride
- + Remineralises through the body of a lesion making enamel stronger and more acid resistant
- + Is a superior delivery system for topically applied fluoride
- + Neutralises acid from plaque, from internal acid sources (e.g. reflux) and from external acid sources (e.g. acidic beverages)
- + Provides fast relief from cervical and post-bleaching sensitivity
- + Is easy to apply and great tasting!

# CPP-ACPF

GC Tooth Mousse Plus contains 10% CPP-ACP and 0.2% NaF. Combined together in GC Tooth Mousse Plus they form CPP-ACPF (casein phosphopeptide – amorphous calcium phosphate fluoride).

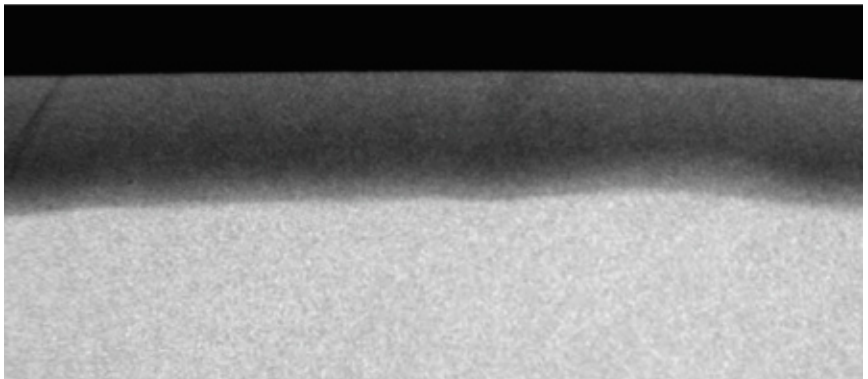
When applied in the mouth CPP-ACPF binds to tooth, pellicle, plaque and soft tissue surfaces localising bioavailable calcium, phosphate and fluoride.



# Demineralised enamel

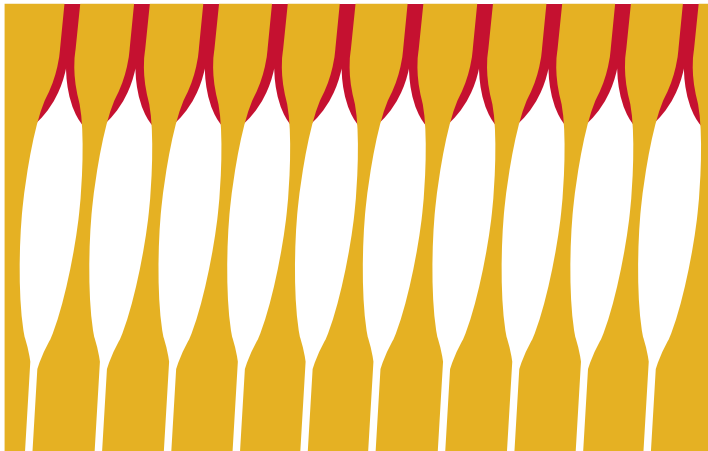


■ Apatite

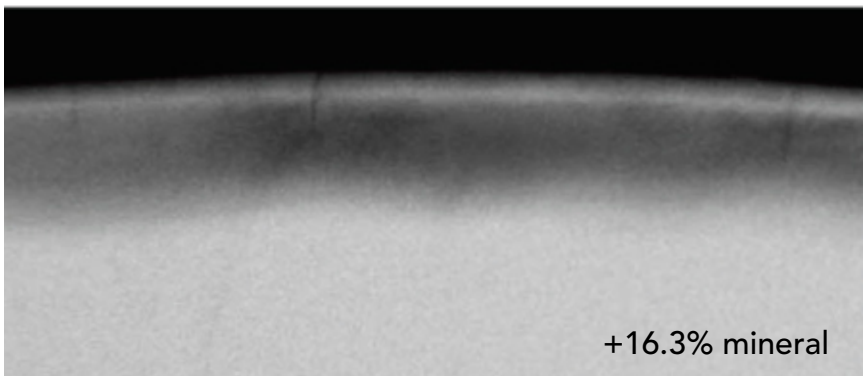


Microradiograph – in situ testing, University of Melbourne

# Remineralised enamel with 5,000ppm fluoride



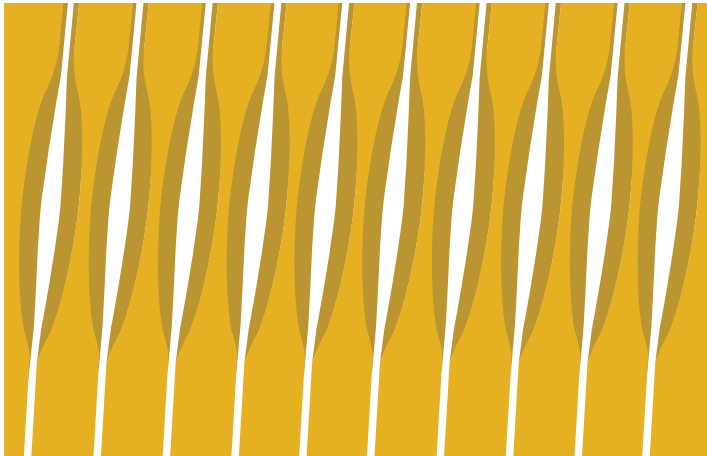
■ Apatite    ■ Fluoroapatite



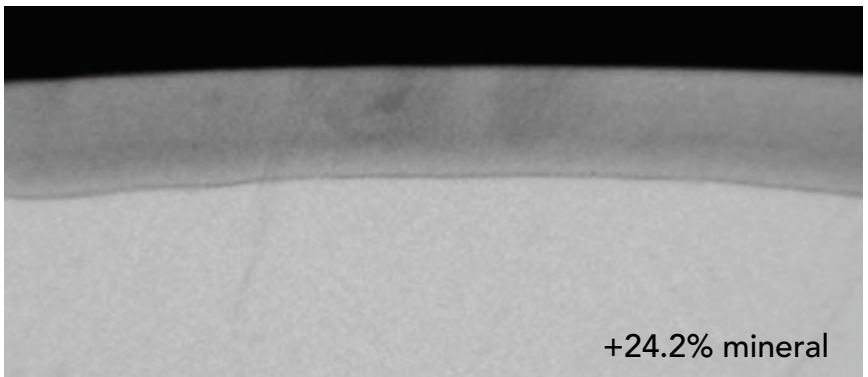
Microradiograph – in situ testing, University of Melbourne

# Remineralised enamel with 10% CPP-ACP

Remineralisation through the body of the lesion.



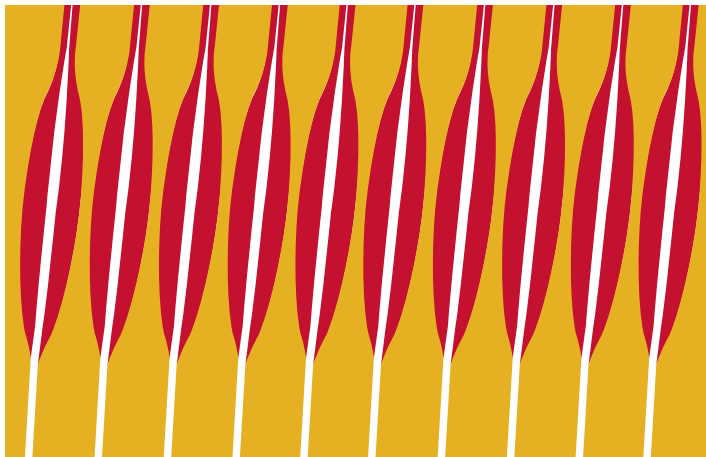
■ Apatite    ■ Hydroxyapatite



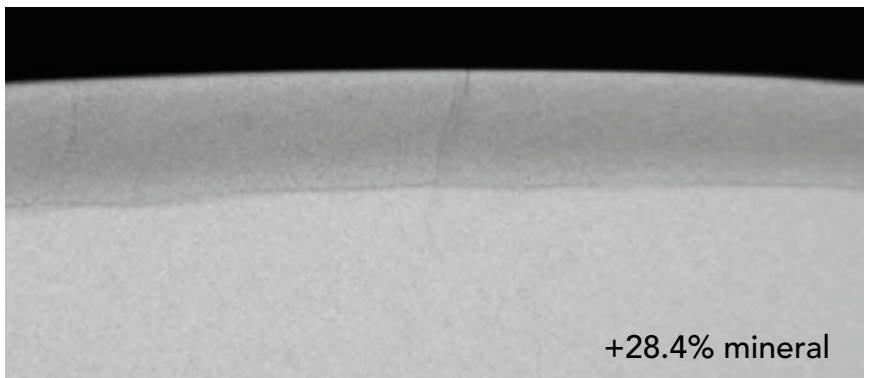
Microradiograph – in situ testing, University of Melbourne

# Remineralised enamel with 10% CPP-ACPF

Remineralisation through the body of the lesion.  
Remineralised enamel is more acid resistant.



■ Apatite    ■ Fluoroapatite



Microradiograph – in situ testing, University of Melbourne

# Use GC Tooth Mousse Plus for:

- + Patients with active caries
- + Patients with poor plaque control
- + Patients with erosion and gastric reflux
- + Xerostomic patients
- + Patients with an acidic oral environment
- + Medically compromised patients
- + Desensitising
- + White spot lesions
- + Pregnant mothers
- + Orthodontic treatment (during and after)
- + High caries risk patients
- + Extra protection for teeth

## How often to apply?

- + Nightly application is standard
- + For high risk patients, use morning and night

# How to apply GC Tooth Mousse Plus

- + Apply using a clean finger, cotton tip, swab, interproximal brush or custom tray
- + Leave undisturbed for three minutes
- + Spread around the mouth with the tongue and hold for a further one to two minutes
- + Expectorate and avoid food or drink for 30 minutes



## CAUTION

- GC Tooth Mousse Plus contains 0.2% (900ppm) fluoride.
- It is not recommended for children under six.
- It is not recommended for overnight application in children under 12.
- Do not use on patients with a milk protein allergy and/or sensitivity to benzoate preservatives.

# Order GC Tooth Mousse Plus from your local GC dealer.



**GC TOOTH MOUSSE PLUS 10 PACK INCLUDES  
4 X MINT, 4 X STRAWBERRY AND 2 X VANILLA**



**GC TOOTH MOUSSE AVAILABLE IN  
MELON, STRAWBERRY, TUTTI-FRUTTI, MINT & VANILLA**

[www.gcasia.info](http://www.gcasia.info)



GC Tooth Mousse Plus contains RECALDENT™ (CPP-ACP), a unique ingredient developed at The School of Dental Science, The University of Melbourne, Victoria, Australia. RECALDENT and RECALDENT Device are trade marks used under licence. GC Tooth Mousse Plus should not be used by people with milk protein allergies. If any allergic reaction occurs, this may indicate sensitivity to the benzoate preservatives, or to some other component of the product. In this event, discontinue use of the product and contact your physician.